

Introduction

Write On – Wipe Off books are engaging, versatile learning tools that can be enjoyed over and over again. The colorful pages are highly durable and allow for easy erasing. These books work with all dry-erase markers and resist ghosting—the remnants of faint print marks. Fill each page and then just wipe away and start again! To ensure your child can use these pages many different times, make sure they erase their writing fairly quickly after the ink dries. Do not leave writing on the page for an indefinite amount of time, otherwise it may be hard to erase.

This book focuses on helping young learners recognize sounds and the letters that represent those sounds. Using picture clues, children are encouraged to name each item pictured, listen for the *beginning, middle, or ending* sound, and identify it.

Listening to each word as it is pronounced is key. Then, they will either choose the correct letter or write a letter to complete a word.

As children focus on the sounds letters make they will also begin to discover patterns and rhyming words. The more comfortable children become with the letters of the alphabet, the sounds they make, and the words they create, the better readers they will become.

Let's get started!

Gg Endings

Directions: Use the Word Bank to write the word for each item that ends with the /g/ sound.

Word Bank

bag

leg

bug

log

dog

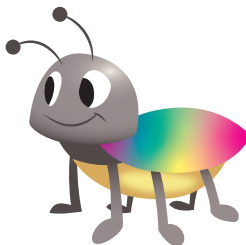
pig











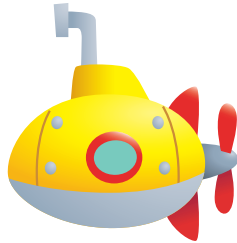


Finish the Word

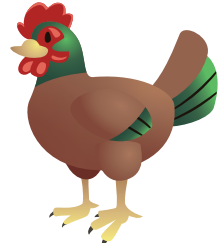
Directions: Fill in the missing beginning, middle, or ending letter to complete each word.



ma _____



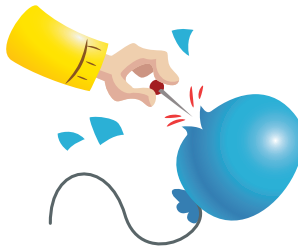
s _____ b



_____ en



b _____ n



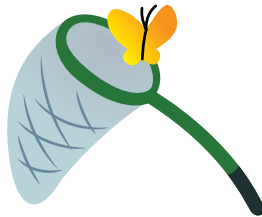
po _____



_____ an



_____ ug



n _____ t



t _____ p

Find the Rhymes

Directions: Read each sentence and circle the two words that rhyme. Then, draw a line to the correct picture.

1 The cat has a bat.



2 My bed is a sled.



3 The dog is on a log.



4 A fox is in the box.



5 A cub is in my tub!



6 The pig has a wig.

