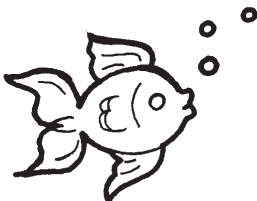
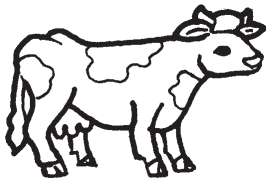
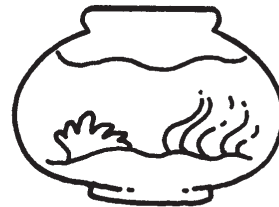
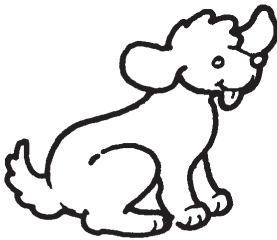
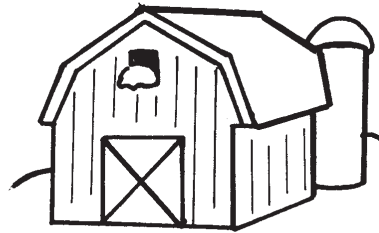
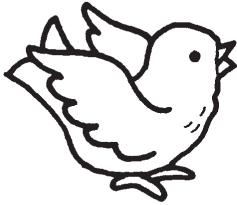




# Where Do I Live?

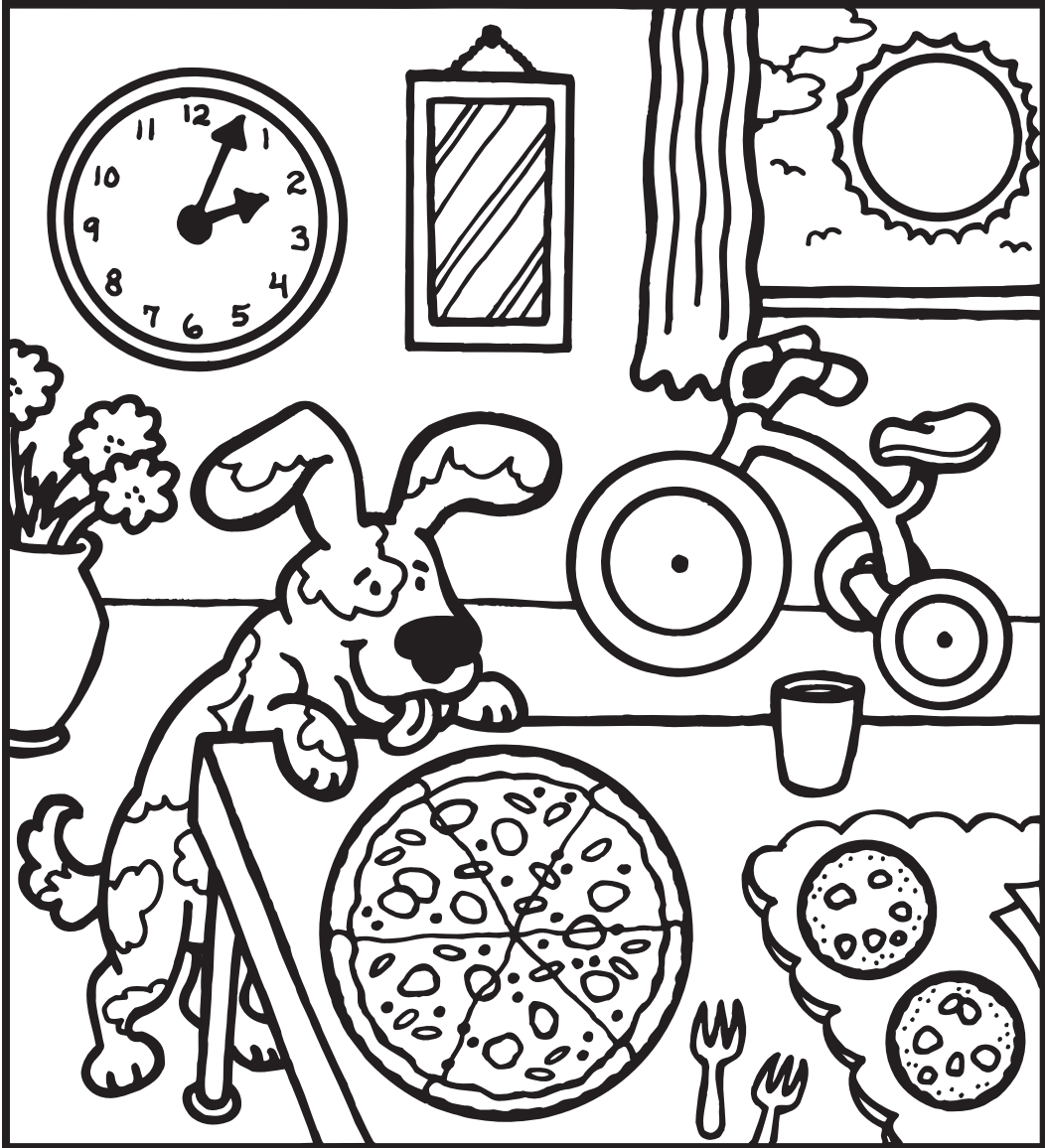
**Directions:** Draw a line to match each animal with its home. Then color the pictures.





# Circle Scene

**Directions:** Color each item that looks like a circle.



I found \_\_\_\_\_ circles.



# Choo, Choo,

**Directions:** Each section of train track is numbered. How many sections long is each train?

A train consisting of an engine and one rectangular car is positioned on a track with 10 numbered sections. The engine occupies sections 4, 5, and 6. The car occupies sections 1 and 2.

\_\_\_\_\_ long

A train consisting of an engine and three rectangular cars is positioned on a track with 10 numbered sections. The engine occupies sections 7, 8, and 9. The three cars occupy sections 1, 2, and 3.

\_\_\_\_\_ long

A train consisting of an engine and two rectangular cars is positioned on a track with 10 numbered sections. The engine occupies sections 5, 6, and 7. The two cars occupy sections 1 and 2.

\_\_\_\_\_ long