



Table of Contents

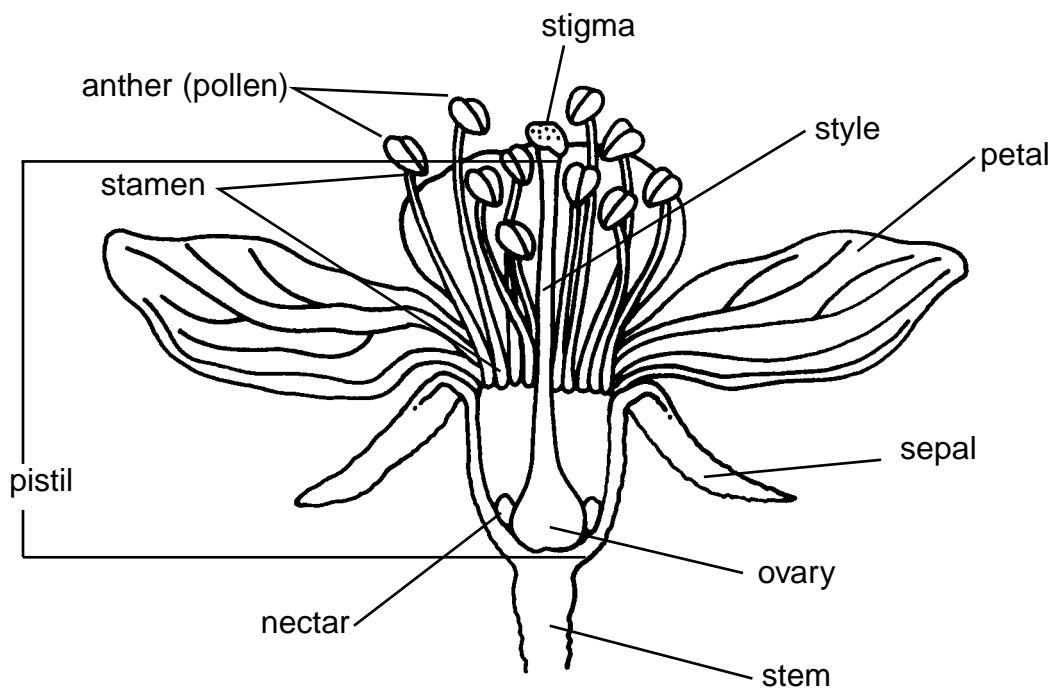
| | |
|--|----|
| Introduction | 3 |
| Lesson: Is This a Seed? | 4 |
| Sorting Sheet | 5 |
| Parent Letter | 6 |
| Lesson: Can You Match This? | 7 |
| Lesson: Making Pictures from Seeds | 8 |
| Lesson: What's Inside a Seed? | 9 |
| Lesson: Where Do Seeds Come From? | 10 |
| Lesson: How Do Seeds Grow? | 11 |
| Seed Growth Record | 12 |
| Lesson: How Do Plants Grow? | 13 |
| Seed Growth Graph | 14 |
| Lesson: How Does Your Garden Grow? | 15 |
| Birdseed Growth Data Sheet | 16 |
| Lesson: Let's Experiment with Plants | 17 |
| Lesson: Leaf Rubbings | 20 |
| Lesson: Cloning Plants | 21 |
| Lesson: Flower Power | 23 |
| Flower Dissection Instructions | 24 |
| Parts-of-a-Flower Data Sheet | 25 |
| How Flowers Reproduce | 26 |
| Lesson: Coloring Plants | 27 |
| Lesson: Taking in Water and Minerals | 28 |
| How Plants Get Their Food | 29 |
| Lesson: Let's Make a Flower | 30 |
| Lesson: Making a Plant Journal | 31 |
| Lesson: The Importance of Bees | 32 |
| Anatomy of a Worker Honeybee | 33 |
| Lesson: Looking at Bees | 34 |
| Lesson: The Story of the Honeybee—Honeybee Colony Simulation (Play) | 35 |
| Teacher and Student Resources | 48 |

Flower Power *(cont.)*

Flower Dissection Instructions

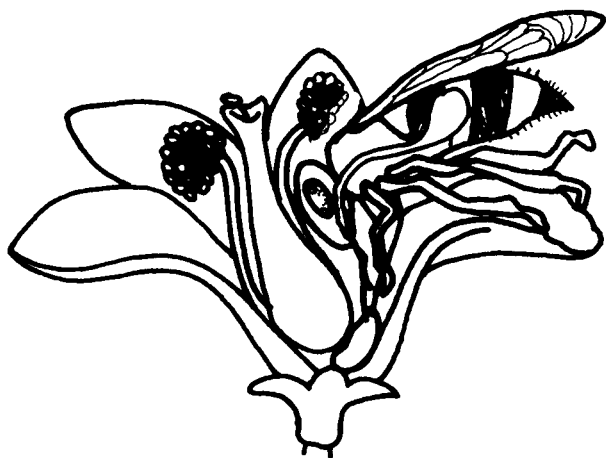
To the Student: Follow directions as you carefully dissect the flower.

- Snip off a piece of the stem. Examine it with the magnifier and then tape it in the box marked “stem” on the Parts-of-a-Flower Data Sheet. Complete the rest of the information in the box.
- Locate the *sepals*, *petals*, *stamens*, and *pistil*. Count their number and write this in the boxes.
- Gently pull off the sepals and tape a specimen in the sepal box. Describe how it feels.
- Smell the flower; if it has a fragrance, describe it in the petal box. Carefully remove the petals and tape one to the data sheet. Answer the question about the flower’s color and fragrance.
- Examine a stamen, the male part of the flower. Look at the top of the stamen (*anther*) with a magnifier to see the pollen grains. Put your fingertip against the anther. Did the pollen stick to your finger? This is what happens when a bee touches it. Rub the pollen between your fingers and then describe what it feels like in the pollen box.
- Take a sample of pollen grains using the sticky side of a piece of clear tape. If you have a microscope, place the tape on a glass slide and examine it. Put a sample of pollen grains in the pollen box. Draw what the pollen grains look like when magnified.
- Remove the stamens and tape one of them in the box. Describe what you see on the anther and draw a magnified view of it.
- Study the pistil, the female part of the flower. Feel the stigma, the top of the pistil. Describe how it feels. At the bottom of the pistil is a swollen area (*ovary*). Try to cut it open with your fingernail. Use your magnifier to see if you can find any tiny seeds inside the ovary. You may be able to split the stem of the stigma (*style*) lengthwise to see if you can locate the pollen tube which has grown from the stigma to the ovary.

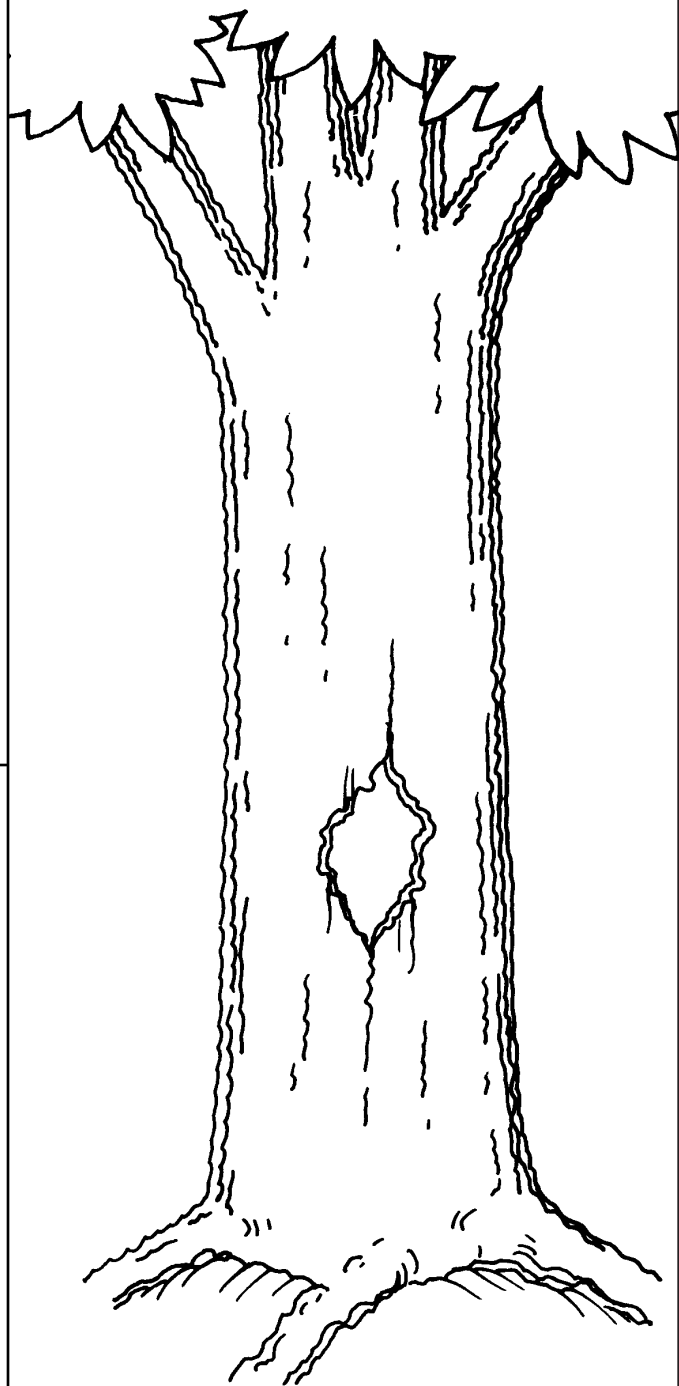


The Story of the Honeybee *(cont.)*

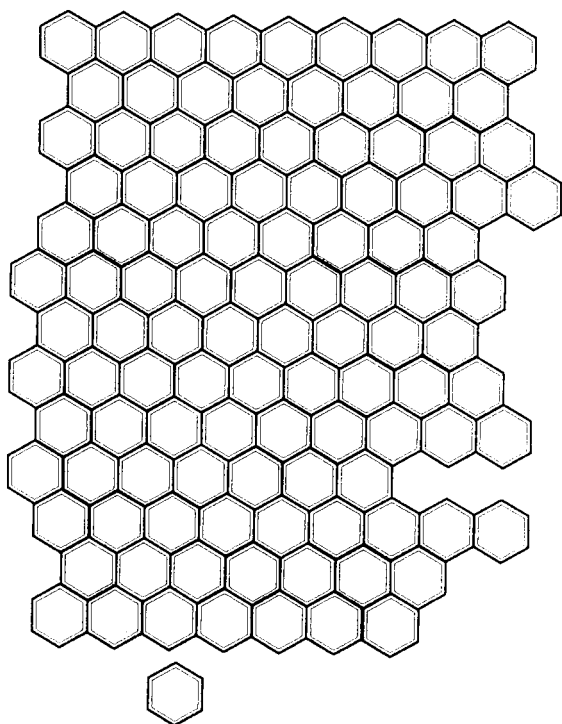
Play Scenery (cont.)



Bee Inside Flower



Tree Trunk



Honeycomb